

# Online Registration

April 01-15, 2019

Registration for our Summer 2019 program will be completed **online only** from April 01, 2019 (8:00am) to April 15, 2019 (11:59 HST.) This will be **the only** registration period for our Summer 2019 program on all islands, including Molokai and Lanai. No other dates will be made available. After the registration period ends, the lottery process will take place. You will receive a confirmation email no later than April 17, 2019, informing you whether your child has received a spot or has been placed on a wait list. **If you do not receive a confirmation or waitlist e-mail by April 17, 2019, it is your responsibility to call the PALS office at 808-270-7404 by April 22, 2019.** There are no exceptions to this deadline as the PALS program is not responsible for any missed or lost emails. Information regarding fees, payment dates, times, and locations will be included in this confirmation email.

*aloha & mahalo*  
THE PALS STAFF



## DEPARTMENT OF PARKS AND RECREATION

Recreation and Support Services

### *pals program*

700 Halia Nakoā Street #2  
Wailuku HI, 96793

maui 808 . 270. 7403    molokai 808 . 553. 3204    lanai 808 . 565. 6979

Federal I.D. #99-6000618

State I.D. #Tax-Exempt

#### ACCESS STATEMENT

The Maui County Department of Parks and Recreation's PALS program is committed to making its programs and services accessible to everyone. If you have a need for reasonable modification due to a disability or need this information in an alternative format, please notify the Department's Inclusion Specialist at 808-270-1792. Please leave a message.

This institution is an equal opportunity provider.



*malama  
ina  
keiki  
to care  
for the  
children*



summer 2019 **program dates**

Thursday, June 6, 2019 –  
Friday, July 26, 2019

HOLIDAYS (CLOSED)  
Tues. 06.11.19 & Thurs. 07.04.19

summer 2019 **program rates**

All Rates are now based by entire program sessions rather than per day totals. Program rates reflect payment for each child enrolling in the program.

In order for families to qualify for the reduced/free rates, proof/verification of participation in the D.O.E

Reduced/Free Lunch program must be presented at time of payment.

**Example:** For a family who qualifies for the Department of Education Reduced lunch rate and enrolling 3 children, the payment will be as follows: 1st child rate (\$112) + 2nd child rate (\$84) + an additional child rate (\$56) = \$252.00 for the 3 children.

CHILDREN	REG.	RED.	FREE
1st Child	\$ 160	\$ 112	\$ 64
2nd Child	\$ 120	\$ 84	\$ 48
Each Addt'l	\$ 80	\$ 56	\$ 32

summer 2019 **program locations**

**maui**

Princess Nahienaena Elementary School  
King Kamehameha III Elementary School

Hana PALS Room

Eddie Tam Social Hall  
Haiku Community Center  
Kula Elementary School  
Paia Elementary School  
Pukalani Elementary School

Kenolio Recreational Center  
Lokelani Intermediate School

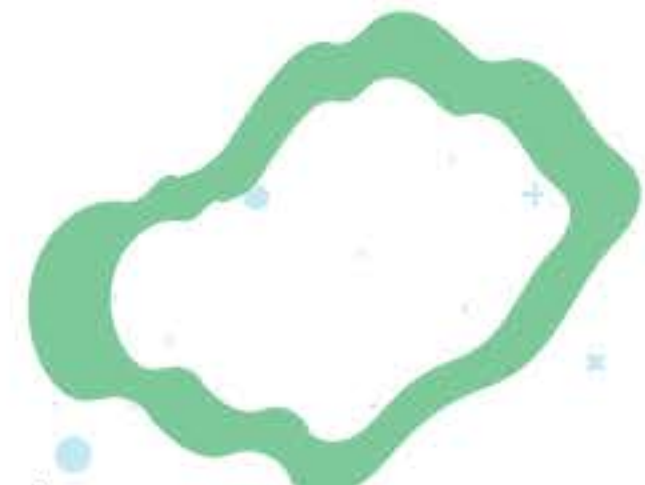
Kahului Community Center  
Lihikai Elementary School  
Pomaikai Elementary School  
Waihee Elementary School  
Wailuku Elementary School

**molokai**

Kilohana Community Center  
Kualapuu Community Center  
Maunaloa Elementary School  
Mitchell Pauole Community Center

**lanai**

Lanai Community Center



Provide a safe and nurturing program for the children of Maui County that addresses their physical, social, cultural, and educational needs. The PALS program does this by promoting physical fitness and health by engaging children in a variety of sports and cultural activities.

MALAMA I NA KEIKI - TO CARE FOR THE CHILDREN

the **mission**  
OF PALS



**Online Registration Process**

[www.co.maui.hi.us/589/PALS-Program](http://www.co.maui.hi.us/589/PALS-Program)

1. From the PALS portion of the County of Maui website, click the "Online Registration" link. No account is needed to register online.
2. Complete PALS registration form. Double check for completeness and accuracy. If all information is correct, press the SUBMIT button. If there is no submit button, this means your form is incomplete and you must correct the item in order to submit the form. When the form is complete, Civic Plus will give you the option to e-mail a copy of your registration form to you. This is a copy and for your records only and is NOT a confirmation e-mail about the placement of the child(ren). **WE HIGHLY RECOMMEND YOU HAVE AN E-MAIL COPY SENT TO YOU.**
3. You will receive a confirmation email from the PALS Program by April 17, 2019 after 4:30 pm. This email will inform you if your child has been placed at a PALS site or on a waitlist. If your child has received a spot, information regarding payment will be included in the email.
4. Families on the waitlist will be notified by April 30, 2019 after 4:30 pm regarding the placement of the child(ren) at a PALS site, and will receive an e-mail with information regarding payment times and locations.

If you do not receive a confirmation or waitlist e-mail by April 17, 2019, it is your responsibility to call the PALS office by April 22, 2019. There are no exceptions to this deadline as the PALS program is not responsible for any missed or lost emails.

**Days & Hours of Operation**

The PALS Sports and Cultural Day Camp program on all islands begins June 06, 2019, and ends on July 26, 2019. PALS hours of operation are 7:00am to 5:00pm, Monday - Friday, excluding holidays.

**Eligibility**

The PALS program welcomes children ages five (5) through twelve (12). If your child has never attended the program, or is turning five (5) this year, please provide a copy of his/her birth certificate as verification of age. Children must be five (5) years old by 06/06/2019.

**Administration & Staffing**

The Department of Parks and Recreation, Recreation and Support Services Division, administers the PALS program. Our centers are staffed by personnel trained in recreation and in the supervision of children. Our staff-to-child ratio is 1-20.

**Registration Notes**

Registration for one session does not guarantee enrollment in the next session. Payment of program fees alone ensures your child(ren)'s enrollment in the PALS program.

Families who do not have access to computers are encouraged to use facilities such as our public libraries, or call the PALS office to schedule an appointment for assistance with registration.