



# COMBATING COVID LEARNING LOSS

Based on the quality of distance learning and return to the classroom timeline, McKinsey & Company predicts by Fall 2021, students could lose

## 3-14 MONTHS

of learning due to disruptions caused by COVID-19.<sup>1</sup>



**In the long term, this loss of learning may result in:**

Lower annual and lifetime earnings<sup>1</sup>

Increase in high school dropout rate<sup>1</sup>

0.8 - 1.3% GDP decrease by 2040<sup>1</sup>

## Three strategies proven to address learning loss:

### COMMUNITY SCHOOLS

Improved grades and test scores<sup>2</sup>

Increased graduation rate<sup>2</sup>

Greater student interest in learning<sup>2</sup>

### SUMMER LEARNING

**1.5**

avg. months in

**INCREASED**

literacy skills for underperforming students that participated in a quality summer program.<sup>3</sup>

### AFTERSCHOOL PROGRAMS



Keep students safe



Support working families



Offer important social-emotional supports



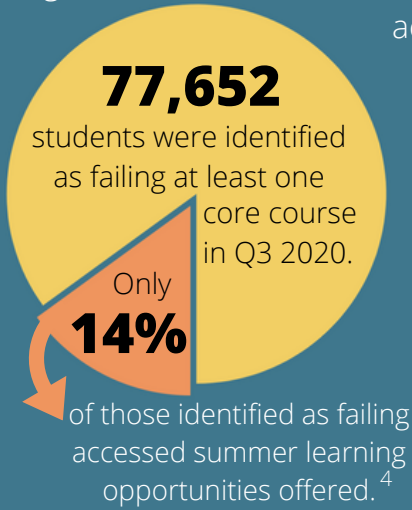
Provide additional learning time and supports

# SUMMER LEARNING

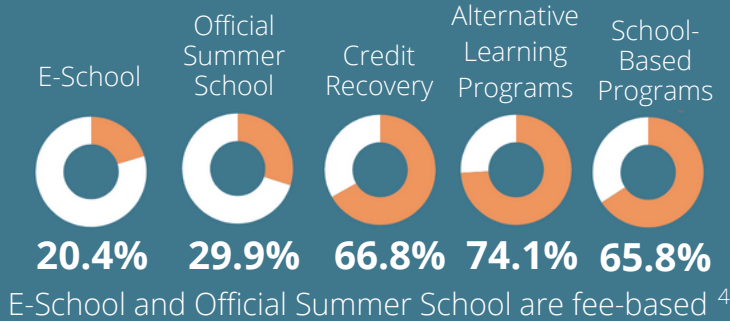
20,719 students served across Hawai'i Department of Education (HIDOE) summer programs in 2020, but not all of the students who needed it the most were able to access summer programs.<sup>4</sup>

## TAKE ACTION

Hawai'i Afterschool Alliance recommends prioritizing summer learning programs as a strategy to combat COVID learning loss, to ensure that all students, especially the most vulnerable, have access to high quality summer programming.



## High Needs Student Participation in Various 2020 Summer Programs



# COMMUNITY SCHOOLS

Community Schools is a strategy where a school becomes the hub of its community and coordinates relationships and resources through the school to accelerate equitable outcomes in health, education, and employment.<sup>2</sup>

Collaborative Leadership and Practices



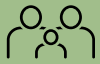
Expanded and Enriched Learning



Integrated Student Supports



Active Family and Community Engagement



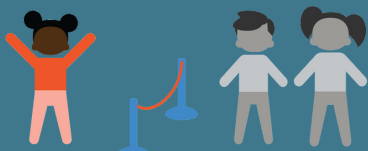
Compared to other schools, community schools responded to the COVID-19 pandemic **FASTER & MORE EFFECTIVELY**<sup>2</sup>

## TAKE ACTION

Hawai'i Afterschool Alliance recommends that the Hawai'i Board of Education and Department of Education support and implement community schools as an equity strategy for increasing access to a high-quality education and addressing COVID learning loss.

# AFTERSCHOOL PROGRAMS

In Hawai'i, demand grows while opportunity shrinks.



For every child in afterschool, two are waiting for an available spot.<sup>5</sup>



Parent satisfaction is at an all-time high with 99% of Hawai'i parents satisfied with their child's afterschool program.<sup>5</sup>

## TAKE ACTION

Hawai'i Afterschool Alliance recommends maintaining current levels of state funding for afterschool programs, and encouraging schools to work with their afterschool providers to serve the most vulnerable students.